



Child Care Planning Council of Ventura County

Ventura County Child Care



Needs Assessment

June 2005



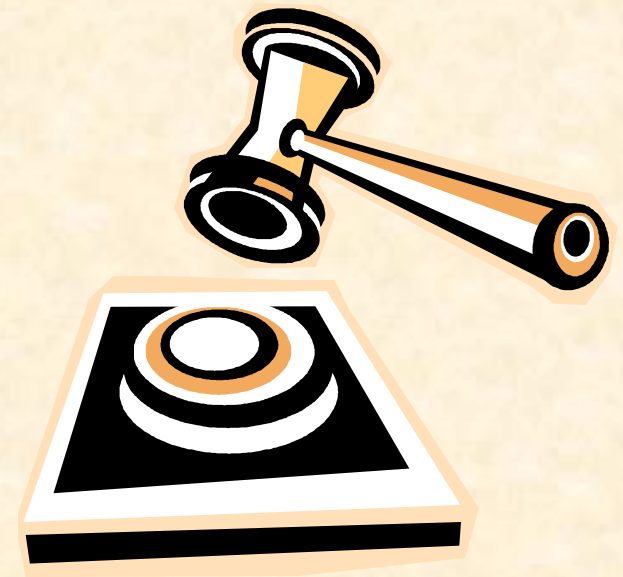


Mission

The Child Care Planning Council of Ventura County actively plans for quality child care based upon the needs of children, families, and early care and education professionals

Elements for Needs Assessment:

With passage of AB 1542 legislation in 1997, the criteria for Local Planning Councils' Needs Assessments became state law.



Ref: CA Education Code 8499.3



Needs Assessment Elements:

Needs of Families:

- ❖ Eligible and not eligible for subsidized child care (including those on waiting list*)
- ❖ By income level
- ❖ Receiving public assistance
- ❖ Special needs based on geographical location

*Centralized Eligibility List (CEL)

Table 3. Ventura County CEL Waiting List, Children Birth to 13 by City, June 28, 2005

City	Number of Children, Birth – 13, on the Ventura County CEL as of June 28, 2005
Oxnard	775
Ventura	199
Ojai	59
Camarillo	230
Thousand Oaks	53
Simi Valley	189
Fillmore	91
Santa Paula	206
Moorpark	81
Port Hueneme	269
Unincorporated Areas	52
TOTAL	2,204

Source: Child Development Resources of Ventura County, Inc., 2005

Needs of Children:

- ❖ Age of children needing care
- ❖ Cultural and linguistic backgrounds
- ❖ Special needs
- ❖ Abuse or neglect, or risk of abuse or neglect

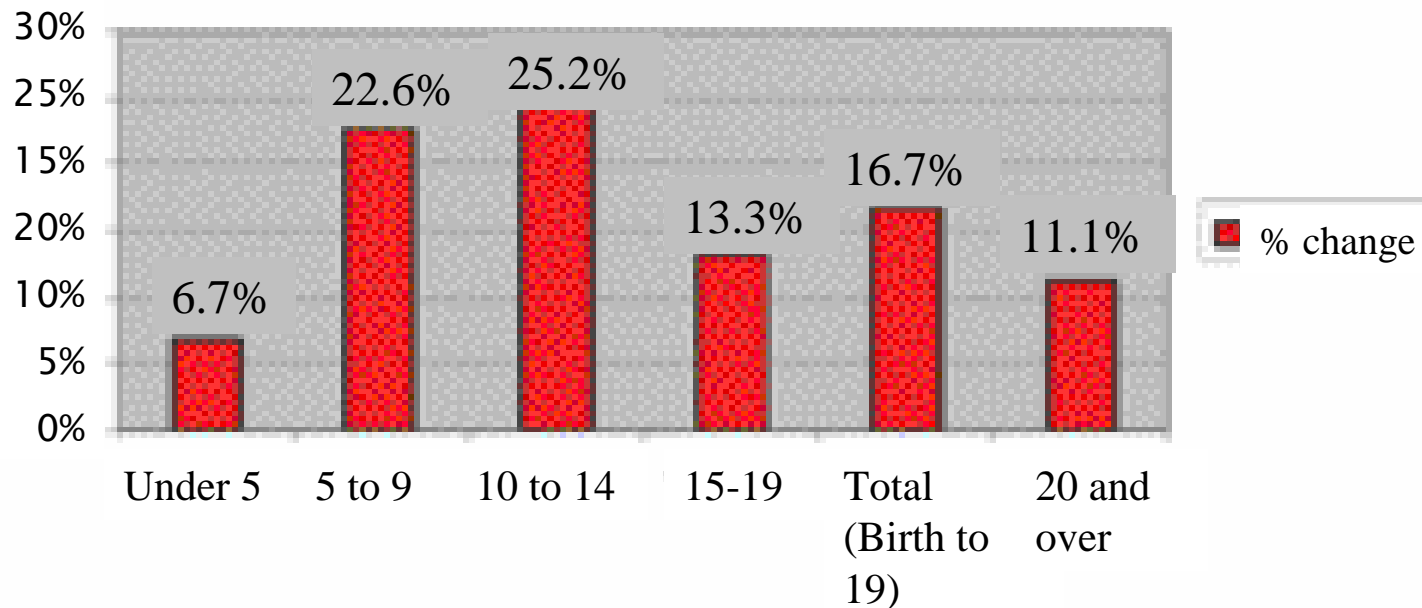


U.S. Census Analysis

Figure 2.



Percentage Change in Age Groups, 1990 - 2000





*County Indicators Showing Need

A. 5 key need indicators were identified & analyzed:

1. Percentage of families with children with both parents working (or 1-parent household working)
2. Number of children 0-13 years by city
3. Percentage of children 0-13 years compared with percentage of existing child care slots
4. Percentage increase in children from 1990 to 2000
5. Median Household income (2004)

Cities received scores of 1-10 (10 being highest) for each of the 5 identified need indicators (highest possible score = 50)

Table 21. Raw Scores – Ventura County Child Care Need Indicators by City

	Oxnard	Santa Paula	Port Hueneme	Fillmore	Ventura	Simi Valley	Moorpark	Camarillo	Thousand Oaks	Ojai
Variable 1	9	8	7	10	6	4	3	5	2	1
Variable 2	10	4	3	2	7	9	5	6	8	1
Variable 3	6	7	10	8	2	5	9	4	3	1
Variable 4	10	9	2	3	6	5	8	4	7	1
Variable 5	6	9	10	7	5	3	1	4	2	8
Total	41	37	32	30	26	26	26	23	22	12
Tie Breaker (2004 Median Household Income)					\$58,114	\$79,155	\$84,653			
Ranking	1	2	3	4	5a	5b	5c	6	7	8

County indicators cont.



B. Teen Birth Rates

- ❖ **GOOD NEWS:** County teen birth rate is low compared to state rate:
 - ✓ County: 9.5 births
 - ✓ State: 43.8 births(measured per 1000 females 15-19 years old)

- ❖ **CAUTION:** Birth rate “hot spots” exist in cities with high need for child care



Conclusions & Observations

- CCPC has achieved its goal of increasing subsidized child care slots
- A substantial need for affordable and subsidized child care slots still remains
- Need for services for special populations
- Growing need for child care for school age children
- No current licensed child care centers dedicated solely to infant & toddler care

Next Steps



1. Following approval, the Needs Assessment will be shared with the community.
2. The CCPC will create a strategic plan based upon findings of the Ventura County Child Care Needs Assessment 2005